

Snowflake Plate

Recipe Courtesy of Gare, Inc.

Ingredients

1610 Square Coupe Dinner Plate

FS-2300 Polar Bear

FS-2314 Black Lab

FS-2305 Blue Heaven

FS-2390 Orange Crush

NTG-9554 Snow Storm

Brushes and other materials:

Soft Fan Brush (# 6541)

Sponge

Pattern

Scissors

Fun Writer with 2390



Special Notes:

* Important information about the paper technique. The paper has to be applied with a glaze under it as in this technique. It cannot stick directly to bisque because when the bisque dries it will fall off. Also the paper must be wet in order for it to stick to the glaze. When using smaller paper pieces you can dip right into the water, apply, and use a sponge to dab off the excess. If the paper stencil is large you won't be able to dip it into the water because it will be too flimsy. Instead, you will need to use a soft fan brush and wet the brush and apply it to the area that you'll be putting the pattern. Do this lightly so you don't mess the design, then dab it with the sponge to remove excess water. This technique doesn't work well if the paper is applied to wet glaze from recent application. Glaze must be dry to the touch. (If you want to do this technique right onto the bisque without any color you would need to use contact paper instead of regular copy paper).

Directions

Step 1- Sponge 2 coats of Polar Bear to top area of the plate.

Step 2- When it's dry to the touch, use the soft fan brush and apply some water across the plate where the snowflake cutout will go. Place the cutout on the center of the plate then dab the excess water off using a damp sponge. Make sure that the paper is down tight. Use your fingers to flatten it out. Let dry to the touch.

Step 3- Apply 2 coats of Black Lab to the entire plate going over the snowflake and around the back side of the plate. Let dry.

gare®

phone 1.888.289.4273

fax 1.800.292.0885

www.gare.com

Step 4- Using the soft fan brush apply 1 heavy coat of Blue Heaven to the top side of the plate. While it's still wet, roll up a paper towel or paper napkin to a ball and dab on the Blue Heaven so you can lift some of the blue off to show the Black. Let dry. Pull off the cutout. When it's completely dry you can clean up any edges that leaked through the pattern.

Step 5- Use the back of a brush or a fun writer filled with Black Lab and apply eyes. Do the same with a fun Writer and Orange Crush on each snowman's nose.

Step 6- Apply snowstorm to make snowballs over the snowman's hands.

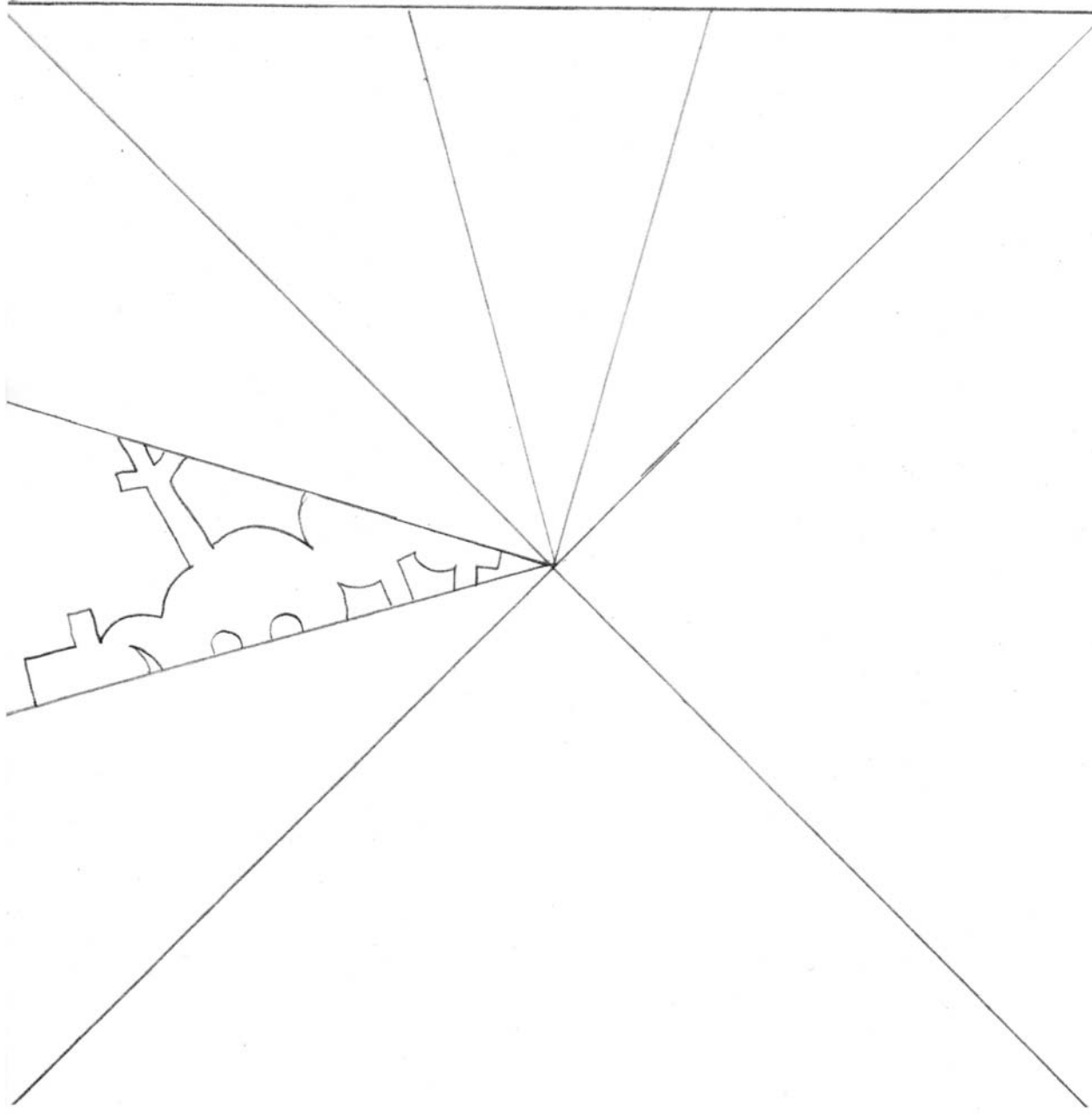
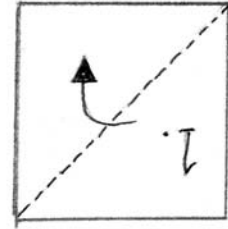
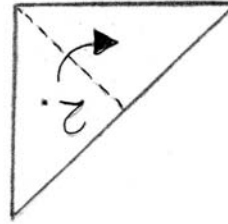
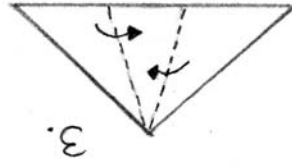
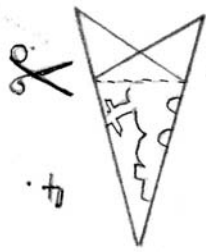
Step 7- Dip into clear glaze and fire to cone 06.

gare[®]

phone 1.888.289.4273

fax 1.800.292.0885

www.gare.com



gare[®]

phone 1.888.289.4273

fax 1.800.292.0885

www.gare.com