

# Gare Christmas Tree Wiring Instructions.

Cardboard sleeve removed for wire attachment.

Attach socket to threaded pipe. Be sure threaded pipe is flush with threaded base on socket. Place rubber washer onto threaded pipe and insert into center hole on base. Place other rubber washer onto threaded pipe and thread on knurled nut. Tighten to hand tight.

Insert stripped ends of wire through hole inside of base. Run wire up through threaded pipe. Tie an Underwriters Knot and attach ends to screw terminals on socket. Tighten screws hand tight.

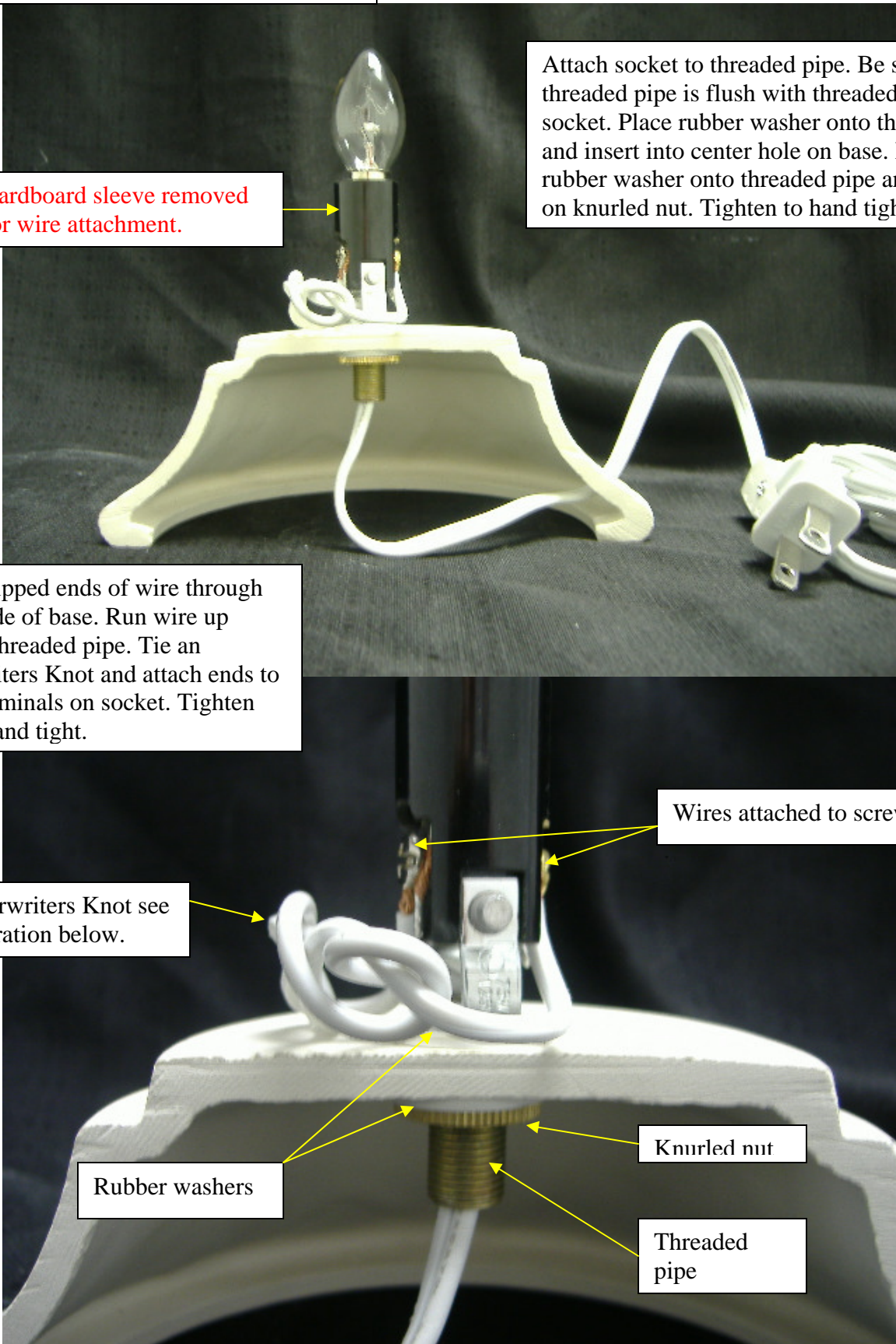
Wires attached to screw terminals.

Underwriters Knot see illustration below.

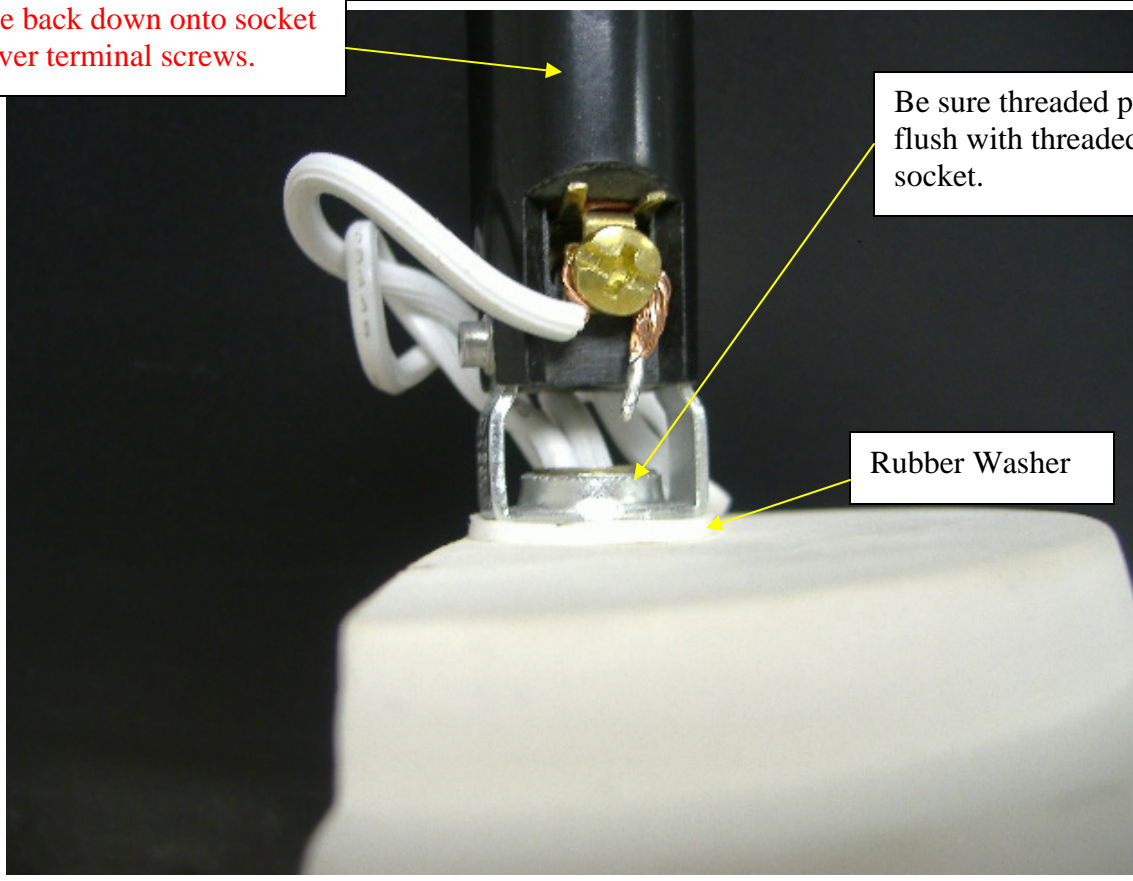
Rubber washers

Knurled nut

Threaded pipe

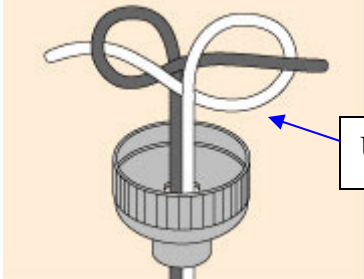


Be sure to slide cardboard sleeve back down onto socket to cover terminal screws.



Be sure threaded pipe is flush with threaded base on socket.

Rubber Washer



Underwriters Knot

**gare**<sup>®</sup>

phone 1.888.289.4273 x.17 fax 1.800.292.0885 email: [srogers@gare.com](mailto:srogers@gare.com) www.gare.com